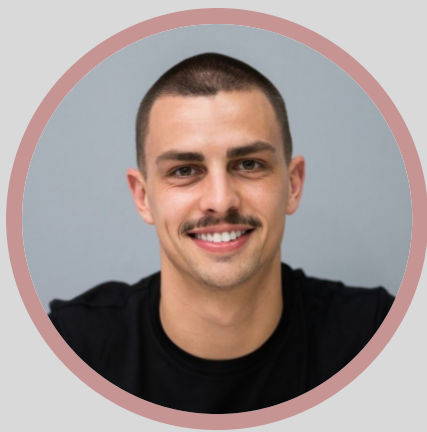


# CAMERON MOORE

## Design-Build Project Manager

City, State Abbr. ZIP | (123) 456-7890 | cameron.moore@example.com | LinkedIn | Portfolio



## PROFILE

Accomplished Design-Build Project Manager with 9 years of experience leading integrated teams in fast-track commercial and institutional projects. Expert at aligning design intent with construction execution, streamlining RFIs, and driving collaboration between architects and contractors.

## KEY SKILLS

- Integrated design-build delivery
- RFI & submittal management
- Stakeholder charrettes
- Procore scheduling

## PROFESSIONAL EXPERIENCE

### Design-Build Project Manager

Integrated Construction Solutions, Seattle, WA | May 2016 - Present

- Directed 8 design-build projects annually (\$5M-\$20M), coordinating in-house design and field teams to meet aggressive 12-month schedules.
- Reduced RFI turnaround by 50% through implementation of a digital submittal portal.
- Facilitated bi-weekly charrettes, improving constructability reviews and saving an average of 5% on projected change-order costs.

### Assistant Project Manager

Pacific Northwest Design-Build, Seattle, WA | June 2013 - April 2016

- Tracked design milestones and construction schedules in Procore, ensuring 95% on-time delivery.
- Coordinated with MEP and structural engineers to resolve design conflicts, reducing rework by 12%.

## EDUCATION

### Bachelor of Science in Construction Management

University of Washington, Seattle, WA | May 2013

## CERTIFICATIONS

- Design-Build Professional (DBIA), Design-Build Institute of America, January 2017